

Provides excellent durability to extreme vibration and shock

PRODUCT SPECIFICATION

SSL

Materials Housing-AL, Lens-PC
Ambient operating temperature -30°C to +60°C
Protection rating IP68(IEC60529)

- Special anti-reflective lens applied to avoid mistaking the reflected sun light as a signal light (W type)
- M type has excellent visibility from a distance with clear and distinctive layer colors
- Superior durability in extreme vibration and shock thanks to molding assembly between aluminum housing and lens
- Customized color arrangement available(Lens color configuration is initiated from the side of cable entry)



SSL100W / SSL200W
SSL300W / SSL400W

SSL LED Steady Signal Lights for Container Spreaders

Model number	Voltage	Certificates	Weight	Cable Entry	Color
SSL100	DC24V	CE	1.80kg	M12-5PIN(male) C10-Cable	● R-Red ● A-Amber ● G-Green ● B-Blue ○ W-White
	AC110V		1.85kg		
	AC220V		1.85kg		
SSL200	DC24V		2.15kg		
	AC110V		2.20kg		
	AC220V		2.20kg		
SSL300	DC24V		2.50kg		
	AC110V		2.55kg		
	AC220V		2.55kg		
SSL400	DC24V		2.95kg		
	AC110V		3.00kg		
	AC220V		3.00kg		

※ CE compliant: DC24V

※ M12-5PIN connector: Female M12 connector is not provided.



SSL100M / SSL200M
SSL300M / SSL400M

Light source current(based on 1 layer)

Voltage	DC24V	AC110V	AC220V
Light source current(1 layer)	150mA	45mA	45mA

SSL Series Vibration and Shock Test Conditions

Axial direction	Direction X	Direction Y	Direction Z
Vibration test conditions	10-38 Hz, 3.5mm 38-500 Hz, 20g 1 oct/min, 2 hours	10-38 Hz, 3.5mm 38-500 Hz, 20g 1 oct/min, 2 hours	10-38 Hz, 3.5mm 38-500 Hz, 20g 1 oct/min, 2 hours
Shock test conditions	50g 6 ms ±1000 shocks	50g 6 ms ±1000 shocks	50g 6 ms ±1000 shocks

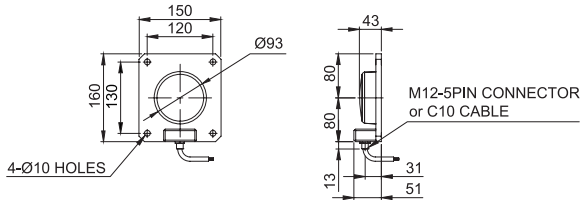
Ordering Specification

SSL100W	-	24	-	R
[Model number]		[Voltage]		[Color]
SSL100W / SSL100M		24-DC24V		● R-Red
SSL200W / SSL200M		110-AC110V		● A-Amber
SSL300W / SSL300M		220-AC220V		● G-Green
SSL400W / SSL400M				● B-Blue
				○ W-White

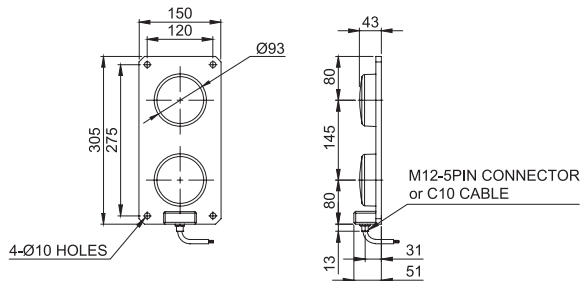
Technical Diagram

Units: mm

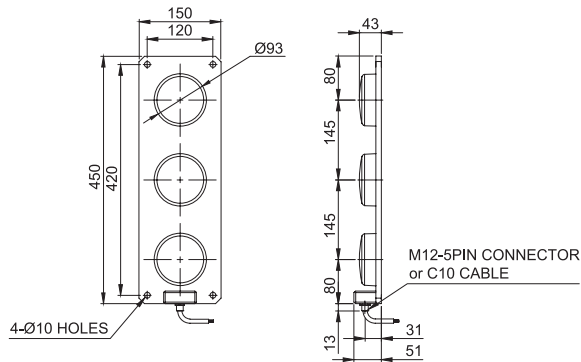
·SSL100W / SSL100M



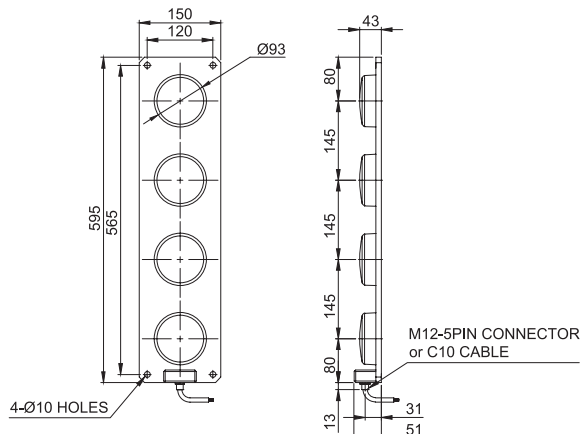
·SSL200W / SSL200M



·SSL300W / SSL300M

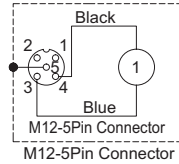


·SSL400W / SSL400M

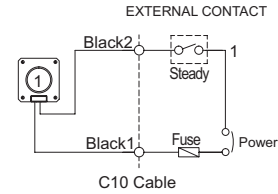


Wiring Instructions

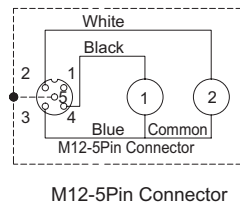
·SSL100W / SSL100M



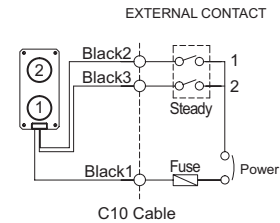
- M12-5PIN connector type
Pin no. 3 is common, however equipped built-in Bridge circuit, power line can be wired to Pin no.3 or 4 regardless of polarity
- C10 CABLE TREADING TYPE
Treading power line, signal line standard : 7G×0.5mm² 600V/80°C I WIRE 1,000mm treading



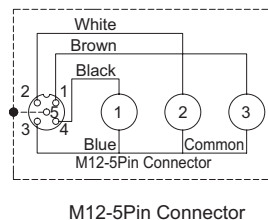
·SSL200W / SSL200M



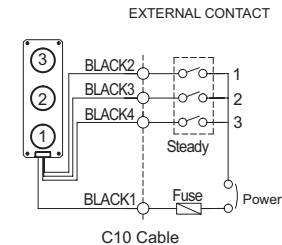
- M12-5PIN connector type
Pin no. 3 is common, however equipped built-in Bridge circuit, power line can be wired to Pin no.3 or 2, 4 regardless of polarity
- C10 CABLE TREADING TYPE
Treading power line, signal line standard : 7G×0.5mm² 600V/80°C I WIRE 1,000mm treading



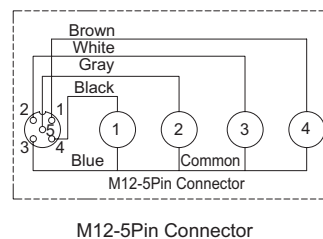
·SSL300W / SSL300M



- M12-5PIN connector type
Pin no. 3 is common, however equipped built-in Bridge circuit, power line can be wired to Pin no.3 or 1, 2, 4 regardless of polarity
- C10 CABLE TREADING TYPE
Treading power line, signal line standard : 7G×0.5mm² 600V/80°C I WIRE 1,000mm treading



·SSL400W / SSL400M



- M12-5PIN connector type
Pin no. 3 is common, however equipped built-in Bridge circuit, power line can be wired to Pin no. 3 and pin no. 1, 2, 4, 5 regardless of polarity
- C10 CABLE TREADING TYPE
Treading power line, signal line standard : 7G×0.5mm² 600V/80°C I WIRE 1,000mm treading

